

HAMMER TACKER

G-101 / Top Load

- For A-11 & T-50 staples 6-10 mm
- Tool weight: 0.6 kg (1.4 lbs.)
- Magazine capacity: 84 pcs
(A full strip)

PATENTS:

U.S.A. US 7,975,892 B2

TAIWAN M 371620

CHINA ZL 2009 2 0167665.6

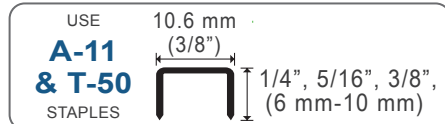


Features:

- All steel construction
- Ergonomic handle grip
- Durable chrome-plated
- Light weight
- Quick jammed cleaning

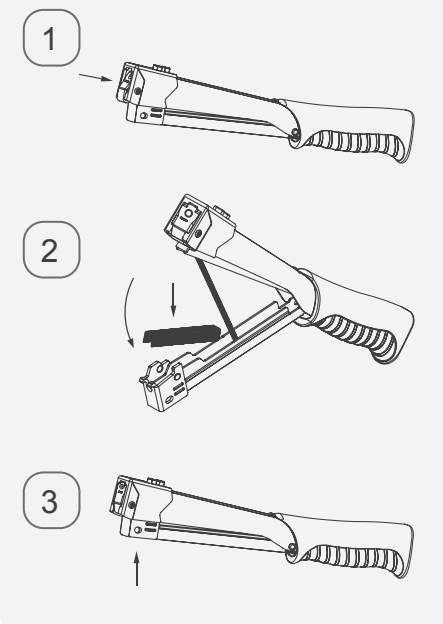
Applications:

- Carpeting
- Insulation
- Roofing
- House wrap
- Poly sheeting



- Gauge: 20
- Crown: 10.6 mm
- Wire: 0.5 x 1.25 mm
- Staple lengths: 1/4", 5/16", 3/8" (6, 8, 10 mm)

How to load:



Available staples in:

- A-11
- ARROW T-50
- RAPID 140
- BLACK & DECKER 6000E
- BOSTITCH TRA700
- SENCO H
- KWB 057
- WOLFCRAFT 056



GREAT-ELITE INDUSTRIAL CO., LTD.

ADD: 299 TUN WAN SHOU RD., KUEI-SHAN TOWNSHIP, TAOYUAN COUNTY 33355, TAIWAN

PHONE: 886-3-329-9658 FAX: 886-3-329-9657 Email: ge9658@ms8.hinet.net <http://www.great-elite.com.tw>